



3G/4G Wireless N Router

3G/4G and WAN
for Ensured Access

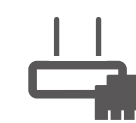
TL-MR3420



300Mbps



3G/4G Sharing

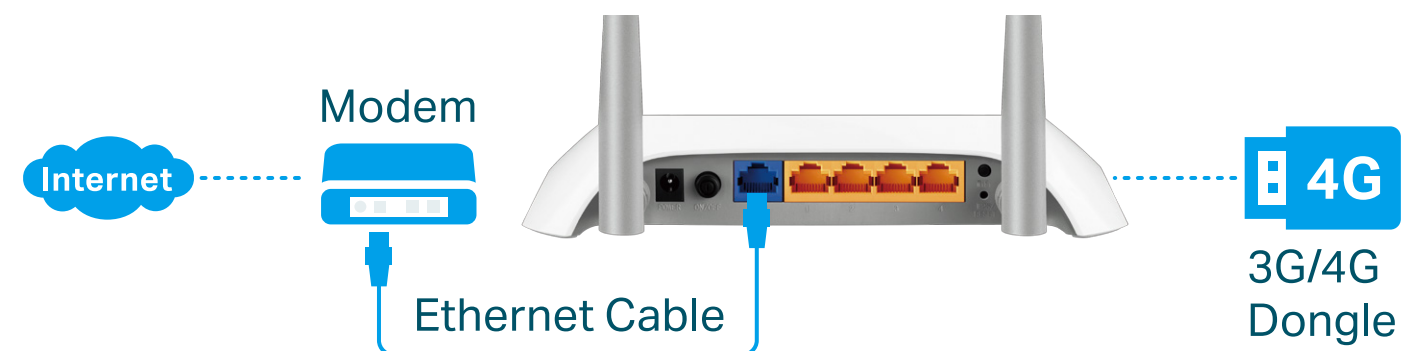


WAN Connection
Backup

Highlights

Ensure Internet Access

With both 3G/4G and WAN connectivity, the TL-MR3420 always keeps you online. Take advantage of flexibility when choosing and setting up your network, and share a 3G/4G mobile broadband connection through wired or wireless connections.



Quick and Reliable Wi-Fi

Strong Wi-Fi speeds of up to 300Mbps are perfect for daily internet access needs to devices throughout your home.



Highlights

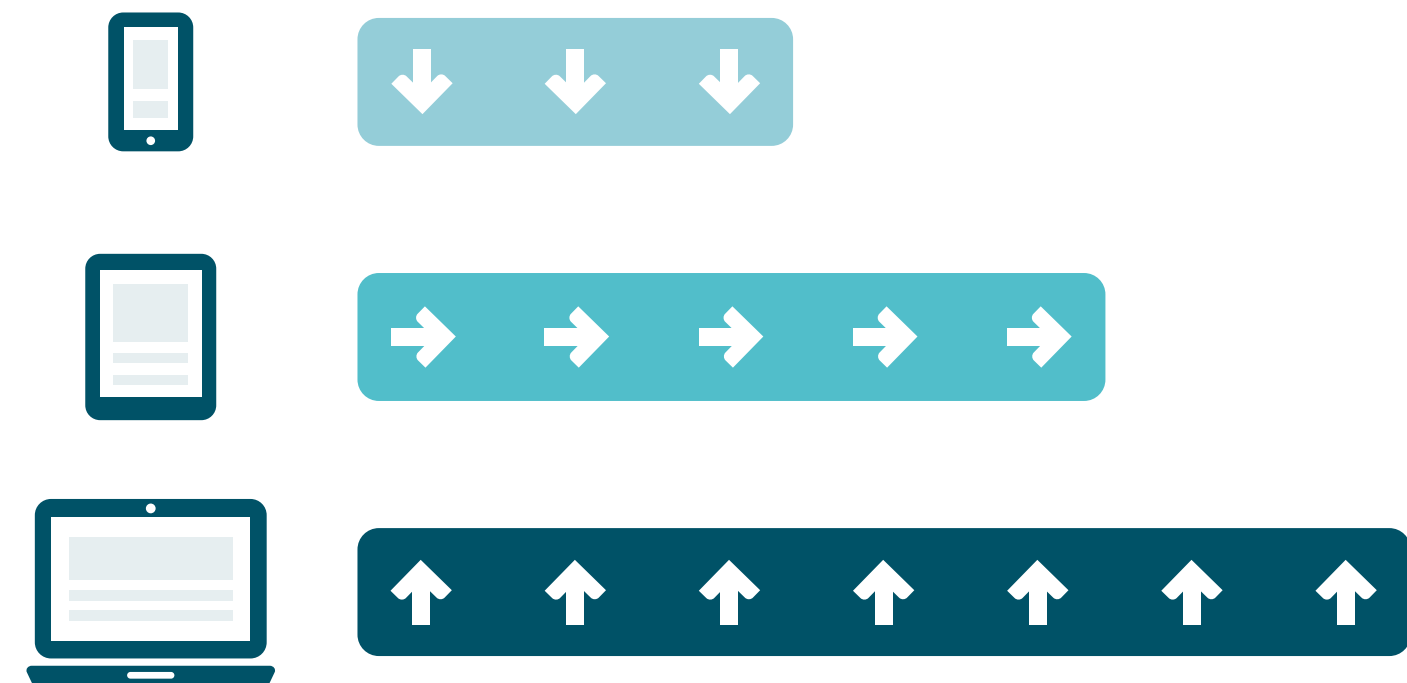
Parental Controls

Easily manage when and how connected devices can access the internet to ensure safe, responsible surfing for your whole family.



Bandwidth Control

Assign your preferred devices with more bandwidth to give them priority for bufferless streaming and lag-free gaming.

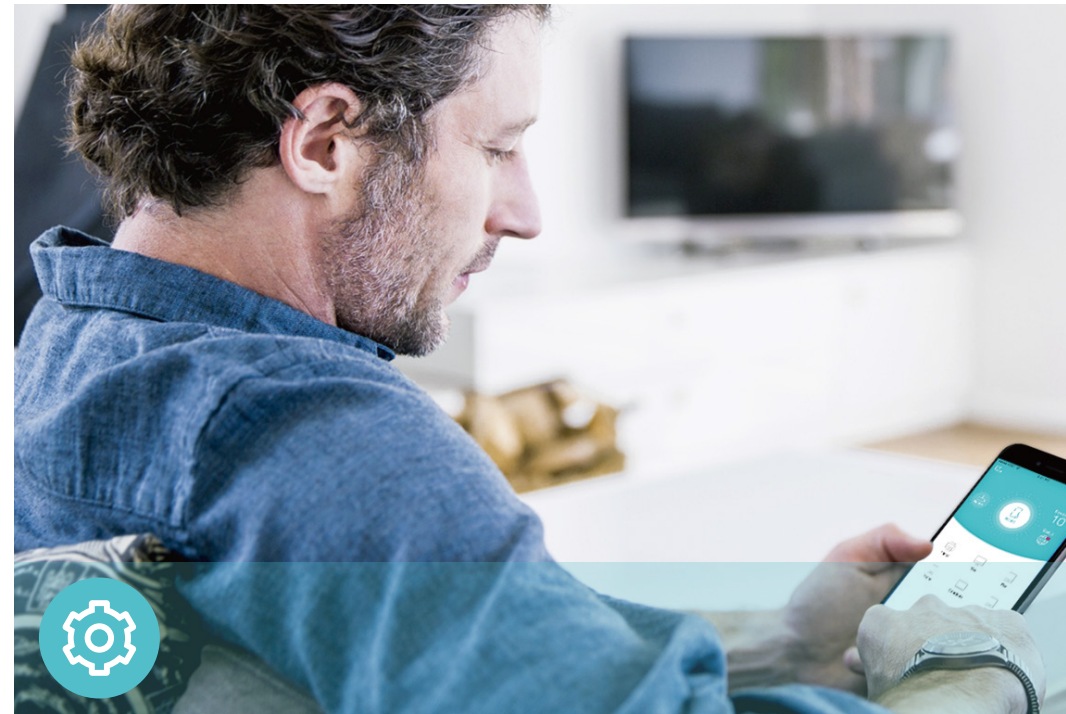


Features



Reliability

- **Wireless N Speed** – 300Mbps Wi-Fi speed meets your daily internet needs
- **802.11n** – Backward compatible with 802.11b/g products
- **Easy Bandwidth Management**– Bandwidth Control allocates necessary speed of each connected device to ensure quality of multimedia streaming



Ease of Use

- **Intuitive Web UI** – Ensures quick and simple Installation without hassle
- **Fast Encryption** – One-touch WPA wireless security encryption with the WPS button
- **Hassle-free Management with Tether App** – Network management is made easy with the TP-Link Tether App, available on any Android and iOS device



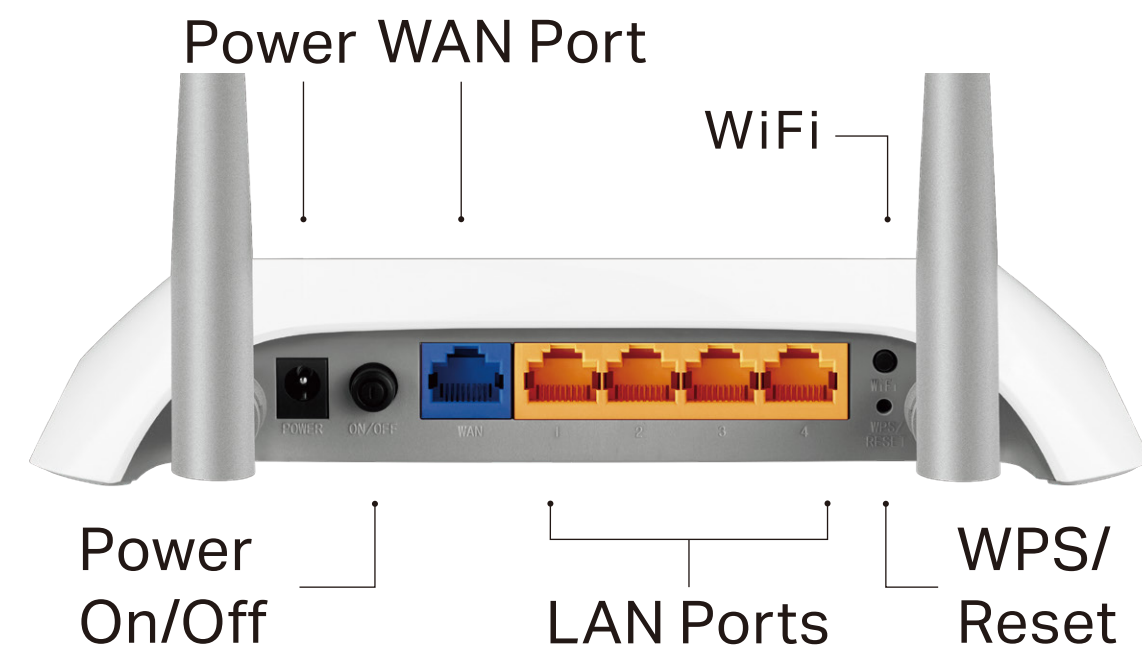
Security

- **Guest Network** – Keeps your main network secure by creating a separate network for friends and visitors
- **Access Control** – Establishes a whitelist or blacklist to allow or restrict certain devices to access the internet
- **Parental Controls** – Restricts internet access time and contents for children devices
- **Encryptions for Secure Network** – WPA-PSK and WPA2-PSK encryptions provide active protection against security threats

Specifications

Hardware

- Ethernet Ports: 4 10/100Mbps LAN Ports, 1 10/100Mbps WAN Port
- Buttons: Power On/Off Button, Wi-Fi On/Off Button, WPS/Reset Button
- Antennas: Two Fixed Omni-Directional Antennas
- External Power Supply: 12V/1A
- Dimensions (W x D x H): 8.0× 5.4×1.7 in. (204×138×44mm)



Wireless

- Wireless Standards: IEEE 802.11b/g/n
- Frequency: 2.4GHz
- Signal Rate: 300Mbps
- Transmit Power: < 20dBm
- Reception Sensitivity:
2.4GHz:
270M: -70dBm@10% PER
130M: -73dBm@10% PER
108M: -74dBm@10% PER
54M: -75dBm@10% PER
11M: -86dBm@10% PER
6M: -92dBm@10% PER
1M: -95dBm@10% PER
- Wireless Function: Enable/Disable Wireless Radio, WDS Bridge, WMM, Wireless Statistics
- Wireless Security: 64/128-bit WEP, WPA/WPA2, WPA-PSK/WPA2-PSK encryptions

Specifications

Software

- Quality of Service: WMM, Bandwidth Control
- WAN Type: Dynamic IP/Static IP/PPPoE/PPTP(Dual Access)/L2TP(Dual Access)
- Management: Access Control, Local Management, Remote Management
- DHCP: Server, DHCP Client List, Address Reservation
- Port Forwarding: Virtual Server, Port Triggering, UPnP, DMZ
- Dynamic DNS: DynDns, NO-IP
- Access Control: Parental Controls, Local Management Control, Host List, White List, Black List
- Firewall Security: DoS, SPI Firewall, IP and MAC Address Binding
- Protocols: IPv4, IPv6
- Guest Network: 2.4GHz guest network

Others

- Certification:
CE, RoHS
- System Requirements:
Microsoft Windows 98SE/NT/2000/XP/Vista™/7/8/8.1/10, MAC OS, NetWare, UNIX or Linux

Internet Explorer 11, Firefox 12.0, Chrome 20.0, Safari 4.0, or other Java-enabled browser
- Environment:
Operating Temperature: 0°C~40°C (32°F ~104°F)
Storage Temperature: -40°C~70°C (-40°F ~158°F)

Operating Humidity: 10%~90% non-condensing
Storage Humidity: 5%~90% non-condensing
- Package Contents
3G/4G Wireless N Router TL-MR3420

Power Supply Unit

Ethernet Cable

Quick Installation Guide



For more information, please visit

<http://www.tp-link.com/en/products/details/TL-MR3420.html>

or scan the QR code left

Attention: This device may only be used indoors in all EU member states and EFTA countries.

Specifications are subject to change without notice. TP-Link is a registered trademark of TP-Link Technologies Co., Ltd. Other brands and product names are trademarks or registered trademarks of their respective holders. Copyright ©2017 TP-Link Technologies Co., Ltd. All rights reserved.

TP-Link Technologies Co., Ltd.

Building 24 (floors 1, 3, 4, 5) and 28 (floors 1-4) Central Science and Technology Park, Shennan Rd, Nanshan, Shenzhen, China

www.tp-link.com

www.tp-link.com

TP-Link 3G/4G Wireless N Router TL-MR3420