

GIGABYTE™

GIGABYTE Solid State Drive (SSD) - Limited Warranty

Thank you for purchasing a GIGABYTE Solid State Drive(SSD). Before using this product, please read and review the Limited Warranty thoroughly. Your use of this product indicates that you have accepted and agreed to the terms and conditions of this Limited Warranty statement.

GIGABYTE warrants to the original purchasers of this Product that this Product (excluding content and/or software, if applicable, supplied with or within the Product) will be free from material defects in manufacture, conform to GIGABYTE's published product specifications, and be fit for normal use during the applicable "Warranty Period" specified below.

- ❖ The "Warranty Period" referred to above is: certain years from the date of delivery of the Product, provided the Product conforms to and is used in accordance with GIGABYTE's applicable product data sheet and product endurance specification. Warranty period may vary by countries, please visit GIGABYTE website for more detail information or contact with local RMA service center.
- ❖ Warranty coverage requires proof of purchase documentation with evidence of the date of purchase (sales receipt or invoice) and original packaging.
- ❖ Should GIGABYTE, under its discretion, deem that the product suffers from material defects in manufacture, GIGABYTE's sole obligation under this warranty is to replace or repair for free of charge, the defective product or all of the product's defective parts.
- ❖ If this Warranty covers a returned Product, the returned Product may be repaired or an equivalent product to the Product may be made available by the Reseller to the original purchaser. The previous sentence describes the sole and exclusive remedy available in the event this Warranty covers a returned Product.
- ❖ These warranties are valid only for the original owner of the product. GIGABYTE will not extend their warranty to items that are purchased secondhand. This warranty is not assignable; products purchased from secondhand sources are not covered in the warranty by GIGABYTE. This is still true even if the product or packaging appears sealed, advertised as new, or never used in any way. GIGABYTE only offers warranties for items sold by authorized retailers, system builders, and distributors.
- ❖ This Warranty does not cover any damage to this Product which results from accident, abuse, misuse, natural or personal disaster, or any unauthorized disassembly, repair or modification.
- ❖ A Product will be considered to have a material defect or to be materially defective only if such Product does not meet the stated design lifetime (up to the applicable Warranty Period), is returned to the appropriate location within the Warranty Period, and is subject to applicable performance threshold information contained in the Product's GIGABYTE data sheet.
- ❖ The original purchaser must ensure to the extent possible that all data is removed from the Product, and if it is not the case that all data is or can be removed, the original purchaser shall indemnify, defend and hold harmless GIGABYTE and the Reseller for any possible liabilities associated with the potential presence in the returned Product of sensitive and/or personal data, regardless of whether this data relates to the original purchaser or any other third party.
- ❖ It is possible for a drive to be used under conditions which cause the media to wear out (and the Warranty to expire) prior to the expiration of the stated time period in the Warranty, as specified in the applicable endurance specification linked below.
- ❖ Please check for more details on the GIGABYTE Website. <https://www.gigabyte.com/>

- ❖ GIGABYTE shall not be liable for (a) any incidental, indirect, special, exemplary, punitive or consequential damages, including but not limited to loss of profits and/or loss of data, other loss, damage or expense directly or indirectly arising from any defect or inability to use the Product or poor performance, either separately or in combination with other equipment, regardless of whether GIGABYTE or the original purchaser has been advised of the possibility of such damages, nor (b) any amounts in the aggregate in excess of the purchase price paid for the applicable Product(s). GIGABYTE is not liable for and does not cover under warranty, any costs associated with servicing and/or the installation of GIGABYTE products, including the Product.
- ❖ This Warranty sets forth the entire liability and obligations of GIGABYTE with respect to defects, breach of warranty or any other failure to perform or meet specification associated with any Products.
- ❖ GIGABYTE Warranty Guidelines GIGABYTE products, including the Product, must not be used in applications where failure could threaten injury or life, such as aviation, automotive, nuclear, medical or life support systems (or any other form of ultra-hazardous applications), and under no circumstances shall GIGABYTE offer any warranty or have any obligations arising from any such Product uses.
- ❖ Buyer acknowledges that the goods sold by GIGABYTE are being used or incorporated into other products or systems, and the ultimate safety of those products or systems are the sole responsibility of Buyer.
- ❖ This warranty applies only on the condition that the product has been installed, maintained and operated under conditions of normal use and in accordance with the installation guide provided herewith.
- ❖ The provisions of this warranty shall not apply if, in GIGABYTE's sole judgment, the product has been subject to misuse or neglect, improper installation, damaged in an accident, or repaired or altered in any way that affects its performance or reliability.
- ❖ Buyer assumes all risks and liabilities for use of GIGABYTE products in other products or systems. In addition, GIGABYTE is not responsible for any archival, backup or disaster recovery services.

Disclaimer

THIS WARRANTY IS IN LIEU OF ANY OTHER WARRANTIES, EITHER EXPRESS OR IMPLIED, INCLUDING WITHOUT LIMITATION ANY WARRANTIES OF MERCHANTABILITY OR FITNESS FOR A PARTICULAR PURPOSE, TITLE, OR NON INFRINGEMENT, WHICH OTHER WARRANTIES ARE EXPRESSLY EXCLUDED AND DISCLAIMED. GIGABYTE SHALL NOT BE LIABLE FOR LOSS OF PROFITS OR ANY SPECIAL, INCIDENTAL, EXEMPLARY, CONSEQUENTIAL OR PUNITIVE DAMAGES WHICH PURCHASER OR THIRD PARTY MAY SUSTAIN, EVEN IF GIGABYTE HAS BEEN ADVISED OF THE POSSIBILITY OF SUCH LOSSES OR DAMAGES. IN NO EVENT SHALL GIGABYTE'S LIABILITY EXCEED THE PURCHASE PRICE OF THE DEFECTIVE PRODUCT. WITHOUT LIMITING THE GENERALITY OF THE PRECEDING PARAGRAPH, GIGABYTE EXPRESSLY DISCLAIMS ANY AND ALL LIABILITY FOR DIRECT, INDIRECT AND/OR CONSEQUENTIAL DAMAGES, INCLUDING LOST PROFITS, ARISING FROM THE LOSS, CORRUPTION, ERASURE OR DESTRUCTION OF ANY DATA STORED ON OR TRANSMITTED VIA ANY GIGABYTE PRODUCT, INCLUDING, WITHOUT LIMITATION, THE INABILITY TO ACCESS DATA STORED ON ANY SECURE GIGABYTE PRODUCTS THAT REQUIRE A USER-DESIGNATED PASSWORD OR CODE IF THAT PASSWORD OR CODE IS LOST, FORGOTTEN, OR COMPROMISED. USERS HAVE THE OBLIGATION TO BACKUP ALL DATA AND PASSWORDS OR CODES.

Declaration of Conformity

We, Manufacturer/Importer,

G.B.T. Technology Trading GmbH

Address: Bullenkoppel 16, 22047 Hamburg, Germany

Declare that the product

Product Type: **Solid State Drive**

Product Name: **GP-GSM2NE3128GNTD, GP-GSM2NE3256GNTD, GP-GSM2NE3512GNTD, GP-GSM2NE3100TNTD**

conforms with the essential requirements of the following directives:

EMC Directive 2014/30/EU:

| | |
|--|-----------------------|
| <input checked="" type="checkbox"/> Conduction & Radiated Emissions: | EN 55032:2012+AC:2013 |
| <input checked="" type="checkbox"/> Immunity: | EN 55024:2010+A1:2015 |
| <input checked="" type="checkbox"/> Power-line harmonics: | EN 61000-3-2:2014 |
| <input checked="" type="checkbox"/> Power-line flicker: | EN 61000-3-3:2013 |

Low Voltage Directive 2014/35/EU:

| | |
|---|--|
| <input checked="" type="checkbox"/> Safety: | EN60950-1:2006+A11:2009+A12:2011+A2:2013 |
|---|--|

RoHS Directive 2011/65/EU

| | |
|---|--|
| <input checked="" type="checkbox"/> Restriction of use of certain substances in electronic equipment: | This product does not contain any of the restricted substances listed in Annex II, in concentrations and applications banned by the directive. |
|---|--|

CE marking



Signature: Timmy Huang

(Stamp)

Date: Aug. 30, 2019

Name: Timmy Huang

DECLARATION OF CONFORMITY

Per FCC Part 2 Section 2.1077(a)



Responsible Party Name: **G.B.T. INC. (U.S.A.)**

Address: **17358 Railroad Street**

City of Industry, CA 91748

Phone/Fax No: (626) 854-9338/ (626) 854-9326

hereby declares that the product

Product Name: Solid State Drive

Model Number: GP-GSM2NE3128GNTD
GP-GSM2NE3256GNTD
GP-GSM2NE3512GNTD
GP-GSM2NE3100TNTD

Conforms to the following specifications:

FCC Part 15, Subpart B, Section 15.107(a) and Section 15.109 (a), Class B Digital Device

Supplementary Information:

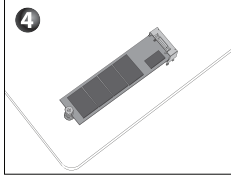
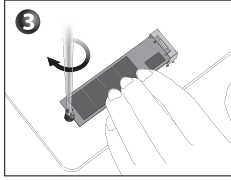
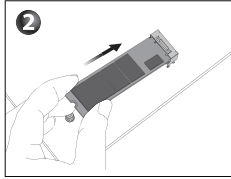
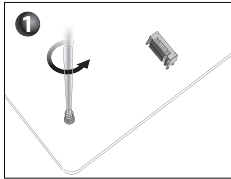
This device complies with part 15 of the FCC Rules. Operation is subject to the following two conditions: (1) This device may not cause harmful and (2) this device must accept any interference received, including that may cause undesired operation.

Representative Person's Name: ERIC LU

Signature: Eric Lu

Date: Aug. 30, 2019

Solid State Drives (SSD) Quick Installation Guide



English

Installation Guide

Follow the steps below to correctly install an M.2 SSD in the M.2 connector.

- Step 1:
Use a screw driver to unfasten the screw and nut from the motherboard. Locate the proper mounting hole for the M.2 SSD to be installed and then screw the nut first.
- Step 2:
Slide the M.2 SSD into the connector at an angle.
- Step 3:
Press the M.2 SSD down and then secure it with the screw.
- Step 4:
The installation is completed, as shown in the picture above.
- * On the motherboard there are three length adjustment holes for the M.2 SSD. Select the proper hole for the M.2 SSD to be installed and refasten the screw and nut.

Deutsch

Installations Handbuch

- Führen Sie bitte die nachfolgenden Schritte aus, damit die M.2 einwandfrei im M.2 Anschluss installiert werden kann.
- Schritt 1:
Benutzen Sie einen Schraubendreher um die Schraube und Mutter vom Mainboard zu lösen. Suchen Sie das passende Montage Loch damit die M.2 SSD installiert werden kann und ziehen Sie dann zuerst die Mutter fest.
- Schritt 2:
Schieben Sie die M.2 SSD in einem Winkel in den Anschluss.
- Schritt 3:
Drücken Sie die M.2 SSD herunter und sichern Sie sie mit der Schraube.
- Schritt 4:
Die Installation ist vollständig und sollte aussehen wie auf dem oben gezeigten Bild.
- * Auf dem Mainboard befinden sich für 3 verschiedene Längeneinstelllöcher für die M.2 SSD. Wählen Sie das richtige Loch für die zu installierende M.2 SSD aus und ziehen Sie die Schraube und die Mutter wieder an.

繁體中文

安裝說明

- 請依下列步驟將 M.2 SSD 正確地安裝於 M.2 插座。
- 步驟一:
請用螺絲起子依序將螺絲和螺柱拆下，依實際要安裝的 M.2 SSD 規格找到適合螺絲孔位之後，先鎖上螺柱。
- 步驟二:
將 M.2 SSD 以斜角方式放入插座。
- 步驟三:
壓住 M.2 SSD 之後，再將螺絲鎖上。
- 步驟四:
如上圖所示即表示安裝完成。
- * 主機板上有 3 個螺絲孔，請依實際安裝的 M.2 SSD 規格調整螺絲和螺柱的位置。

Español

Guía de Instalación

- Siga los pasos debajo para instalar correctamente un SSD M.2 en el conector M.2.
- Paso 1:
Use un destornillador para soltar el tornillo y la tuerca de la placa base. Ubique el agujero correcto para montaje del SSD M.2 que se instalará y atornille la tuerca primero.
- Paso 2:
Deslice el SSD M.2 al conector en el ángulo correcto.
- Paso 3:
Presione la SSD M.2 hacia abajo y luego asegúrela con el tornillo.
- Paso 4:
La instalación está completada, como se muestra en la imagen de arriba.
- * En la placa base hay tres orificios de ajuste de longitud para el SSD M.2. Seleccione el orificio adecuado para el SSD M.2 a instalar y vuelva a ajustar el tornillo y la tuerca.

簡體中文

安裝說明

- 請依下列步驟將 M.2 SSD 正確地安裝於 M.2 插座。
- 步驟一:
請用螺絲起子依序將螺絲和螺柱拆下，依實際要安裝的 M.2 SSD 規格找到適合螺絲孔位之後，先鎖上螺柱。
- 步驟二:
將 M.2 SSD 以斜角方式放入插座。
- 步驟三:
壓住 M.2 SSD 之後，再將螺絲鎖上。
- 步驟四:
如上圖所示即表示安裝完成。
- * 主板上 有 3 個螺絲孔，請依實際安裝的 M.2 SSD 規格調整螺絲和螺柱的位置。

Русский

Инструкция по установке

- Для того, чтобы корректно подключить M.2 SSD-накопитель к соответствующему разъему, следуйте предписаниям инструкции.
- Шаг 1:
С помощью отвертки удалите винт, а затем втулку с резьбой, которая установлена на материнской плате. Определите подходящее монтажное отверстие для установки выбранного M.2 SSD-накопителя и установите в него втулку с резьбой.
- Шаг 2:
Установите M.2 SSD-накопитель в разъем под углом.
- Шаг 3:
Прижмите M.2 SSD-накопитель к втулке и закрепите его винтом.
- Шаг 4:
Процедура инсталляции завершена, как показано на рисунке выше.
- * На материнской плате расположены три монтажных отверстия для установки M.2 SSD-накопителя. Определите подходящее отверстие для установки выбранного M.2 SSD-накопителя, установите на плату втулку с резьбой и закрутите винт.

日本語

インストールガイド

- M.2コネクタにM.2対応SSDを増設する場合、以下の手順に従ってください。
- ステップ 1:
スクレュードライバーを使用してマザーボードからネジとナットを緩めてください。取り付け穴の位置を確認してから、最初にナットを締めます。
- ステップ 2:
コネクタに斜めの角度で M.2 対応 SSD をスライドさせます。
- ステップ 3:
M.2 対応 SSD を下に押してからネジで固定します。
- ステップ 4:
上の写真のように取り付けを完了します。
- * マザーボード上に M.2 対応 SSD 用の 3 つの長さ調整穴があります。インストールする M.2 対応 SSD を固定する適切な穴を選択し、ネジとナットを締め直してください。

한국어

설치 설명서

- M.2 SSD을 M.2 슬롯에 올바르게 설치하기 위하여 아래의 단계를 따라 주십시오.
- 1단계:
드라이버를 이용하여 메인 보드의 M.2 슬롯용 나사와 너트를 풀어 주십시오. M.2 SSD의 길이에 맞게 너트를 메인 보드에 고정하십시오.
- 2단계:
M.2 SSD을 M.2 슬롯에 비스듬히 밀어 넣습니다.
- 3단계:
M.2 SSD을 아래로 누른 상태에서 나사를 감아 줍니다.
- 4단계:
위 그림처럼 설치가 완료가 되었습니다.
- * 메인 보드에는 M.2 SSD의 길이에 따라 설치가 가능한 조정 구멍이 세 개가 있습니다. M.2 SSD의 길이에 따라 알맞은 조정 구멍을 선택한 후 나사와 너트를 다시 조입니다.

产品中有害物质的名称及含量

| 部件名称 | 有害物质 (Hazardous Substances) | | | | | |
|-------------------------|-----------------------------|-----|-----|------------|----------|------------|
| | 鉛Pb | 汞Hg | 鎘Cd | 六价铬 Cr(VI) | 多溴联苯 PBB | 多溴二苯醚 PBDE |
| 电路板 | ○ | ○ | ○ | ○ | ○ | ○ |
| 电阻 | × (注) | ○ | ○ | ○ | ○ | ○ |
| 其他电子元件 (例: 电容, 电感, 连接器) | ○ | ○ | ○ | ○ | ○ | ○ |
| 芯片 | ○ | ○ | ○ | ○ | ○ | ○ |

本表格依据 SJ/T 11364 的规定编制。

○: 表示该有害物质在该部件所有均质材料中的含量均在 GB/T 26572 规定的限量要求以下。

×: 表示该有害物质至少在该部件的某一均质材料中的含量超出 GB/T 26572 规定的限量要求。

注: 尽管产品中使用的至少一种均质材料中含有的有害物质超过 GB/T 26572 的限量要求, 该产品通过豁免符合欧盟 RoHS 标准 (2011/65/EU RoHS 指令附录三第 7(c)-1 条所述的豁免免)。

BSMI CNS15663 限用物質含有情況標示聲明書
Declaration of the Presence Condition of the Restricted Substances Marking

| 單元 Unit | 限用物質及其化學符號 Restricted substances and its chemical symbols | | | | | |
|-------------------------|--|----------------|----------------|---|--------------------------------------|--|
| | 鉛 Lead (Pb) | 汞 Mercury (Hg) | 鎘 Cadmium (Cd) | 六價鉻 Hexavalent chromium (Cr ^{VI}) | 多溴聯苯 Polychlorinated biphenyls (PBB) | 多溴二苯醚 Polychlorinated diphenyl ethers (PBDE) |
| 电路板 | ○ | ○ | ○ | ○ | ○ | ○ |
| 电阻 | - | ○ | ○ | ○ | ○ | ○ |
| 其他電子元件 (例: 电容, 电感, 连接器) | ○ | ○ | ○ | ○ | ○ | ○ |
| 晶片 | ○ | ○ | ○ | ○ | ○ | ○ |

備考 1. "超出 0.1 wt %" 及 "超出 0.01 wt %" (係指限用物質之百分比含量超出百分比含量基準值)。
Note 1. "Exceeding 0.1 wt %" and "exceeding 0.01 wt %" indicate that the percentage content of the restricted substance exceeds the reference percentage value of presence condition.

備考 2. "-" (係指該項限用物質之百分比含量未超出百分比含量基準值)。
Note 2. "-" indicates that the percentage content of the restricted substance does not exceed the percentage of reference value of presence.

備考 3. "-" (係指該項限用物質為排除項目)。
Note 3. The "-" indicates that the restricted substance corresponds to the exemption.